

Easy Read

# Disability Inclusive Emergency Management Toolkit

Easy Read  
overview



Australian Government  
National Emergency Management Agency

We  
support

Australia's  
Disability  
Strategy  
2021-2031

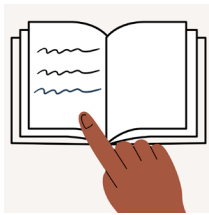
# About this book



This is an Easy Read book.



Easy Read uses pictures to explain ideas.



New words are **bold and green**.

We explain what bold and green words mean.



Easy Read includes key information.



You can get the full toolkit on our website

[www.nema.gov.au](http://www.nema.gov.au).

# Our Disability Inclusive Emergency Management Toolkit



This book is about our **Disability Inclusive Emergency Management Toolkit**.



In this book, we call it **our toolkit**.

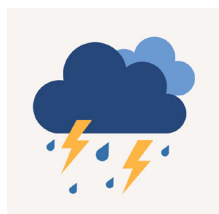


Our toolkit helps organisations plan inclusive **emergency** management.



An emergency might be

- a fire



- a storm.

# What is in our toolkit?



Our toolkit has 4 parts.



1. The Overview



2. The Action Guide



3. The Preparedness Profile



4. The Resource Map

# 1. The Overview

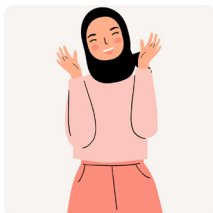


The Overview explains

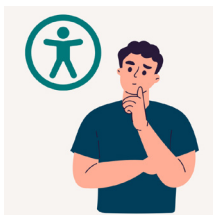
- what tools we made for the toolkit



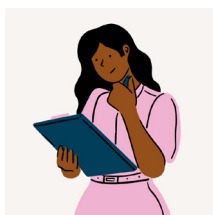
- what is hard for people with disability in emergencies



- why inclusive emergency management is important



- how our toolkit can help organisations be more inclusive in emergencies.



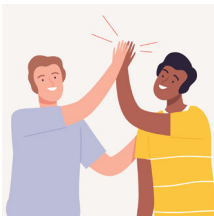
Organisations should read  
The Overview first.

## 2. The Action Guide



The Action Guide includes

- 7 rules for inclusive emergency management



- tips for including people with disability in emergency planning



- ideas for making emergency information and services more **accessible**.

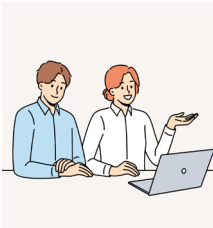


Accessible means information and services can be used by people with disability.

### 3. The Preparedness Profile



The Preparedness Profile helps organisations check they are ready for an emergency.



The Preparedness Profile includes a **self assessment tool** to check if

- staff are ready



- emergency information is up to date



- the building has the right **facilities**.  
For example, accessible ramps.

## 4. The Resource Map



The Resource Map includes emergency planning information for different **sectors**.



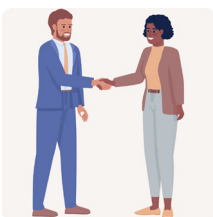
Sectors are different areas of work.

For example

- the community sector



- the government sector.



The map helps sectors work together.



# Why did we make our toolkit?



People with disability face more problems in an emergency.

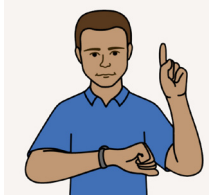


In an emergency, people with disability are more likely to

- get hurt



- feel left out

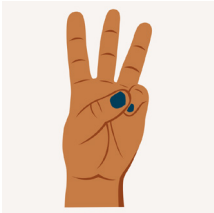


- get help later than people who are not disabled.



In emergencies, everyone has the same right to inclusion.

# How did we make our toolkit?



We followed 3 emergency plans

- the UN Convention on the Rights of Persons with Disabilities



- the Sendai Framework for Disaster Risk Reduction



- Australia's Disability Strategy 2021 to 2023.



The 3 plans include important steps for emergency management.

# Who helped us make our toolkit?



We made the toolkit with help from

- disability groups



- government agencies



- community organisations



- **advocates.**



Advocates stand up for disability rights.

# More information



Visit our website at [www.nema.gov.au](http://www.nema.gov.au)



Call us on 02 6113 9729



Email us at [contact@nema.gov.au](mailto:contact@nema.gov.au)

# Help to call us



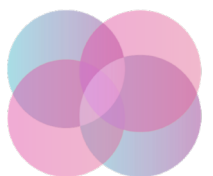
Translating and Interpreting Service  
131 450



National Relay Service  
1800 555 660



TTY  
1800 555 677



Embrace **Access**

Embrace Access wrote this Easy Read book. This book was co-designed by an advisor with lived experience of disability. You must ask for permission to use the words and images in this book. Picture Communication Symbols ©1981–2024 by Tobii Dynavox. All Rights Reserved Worldwide. Used with permission. Boardmaker® is a trademark of Tobii Dynavox. Contact the team at Embrace Access to create your own co-designed Easy Read book [www.embraceaccess.com.au](http://www.embraceaccess.com.au).



**Australian Government**  

---

**National Emergency Management Agency**